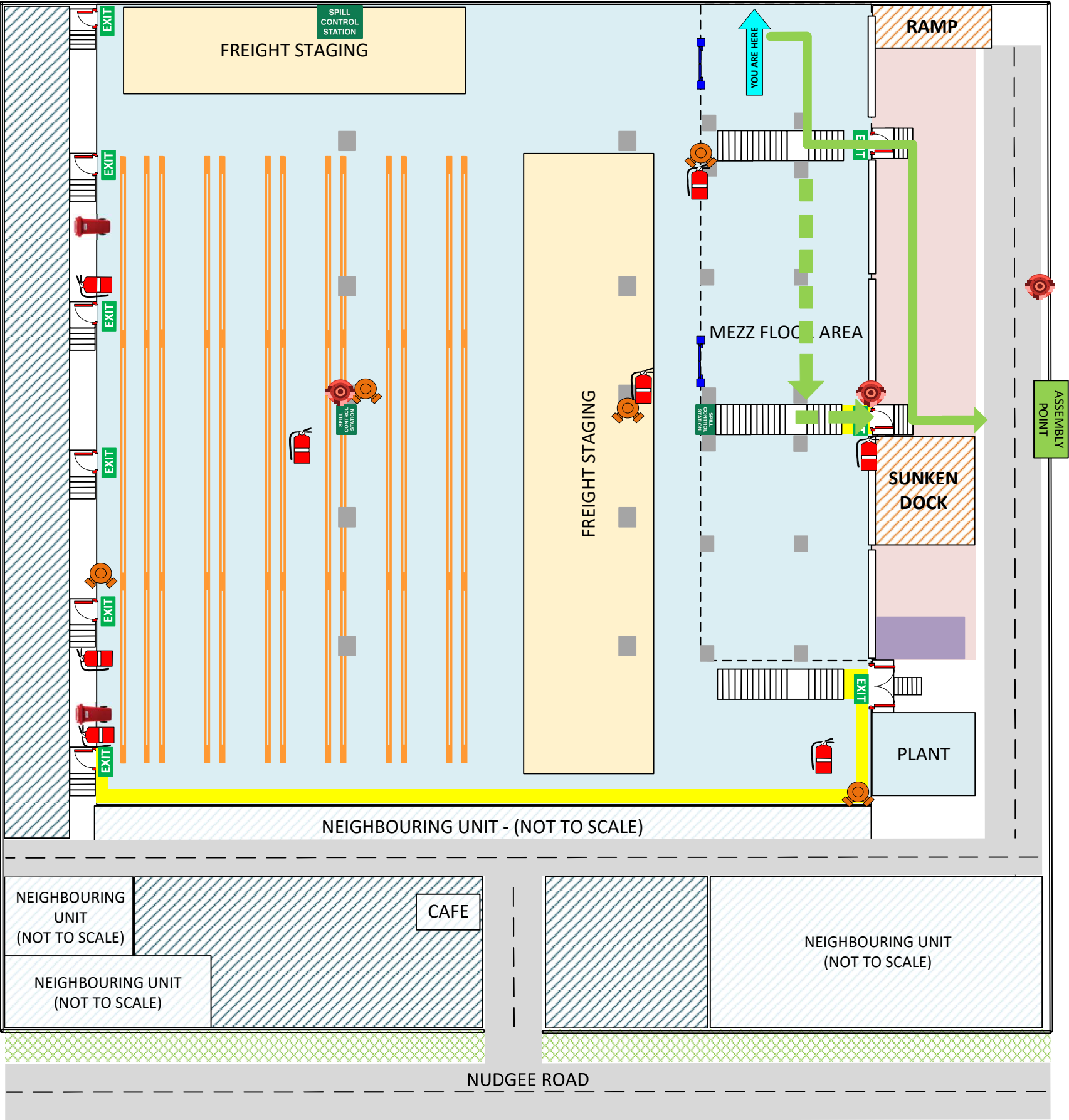




# BRISBANE 3PL EVACUATION PLAN

Unit 4B, 370 Nudgee Road, Hendra QLD 4011



	You are Here
	Emergency Assembly Point
	Fire Door Exit
	Path of Exit
	Alternative Path
	Fire Extinguisher
	Fire Hose Reel
	Fire Hydrant
	First Aid Kit
	Door
	Fire Door
	Spill Control Station
	Spill Bin

**IN CASE OF A FIRE**

**REMOVE PEOPLE**  
From immediate danger

**ALERT THE FIRE SERVICE**  
Break manual call point  
Or call 000

**CONFINE FIRE & SMOKE**  
Close doors and windows  
(if safe to do so)

**EVACUATE**  
To the assembly area

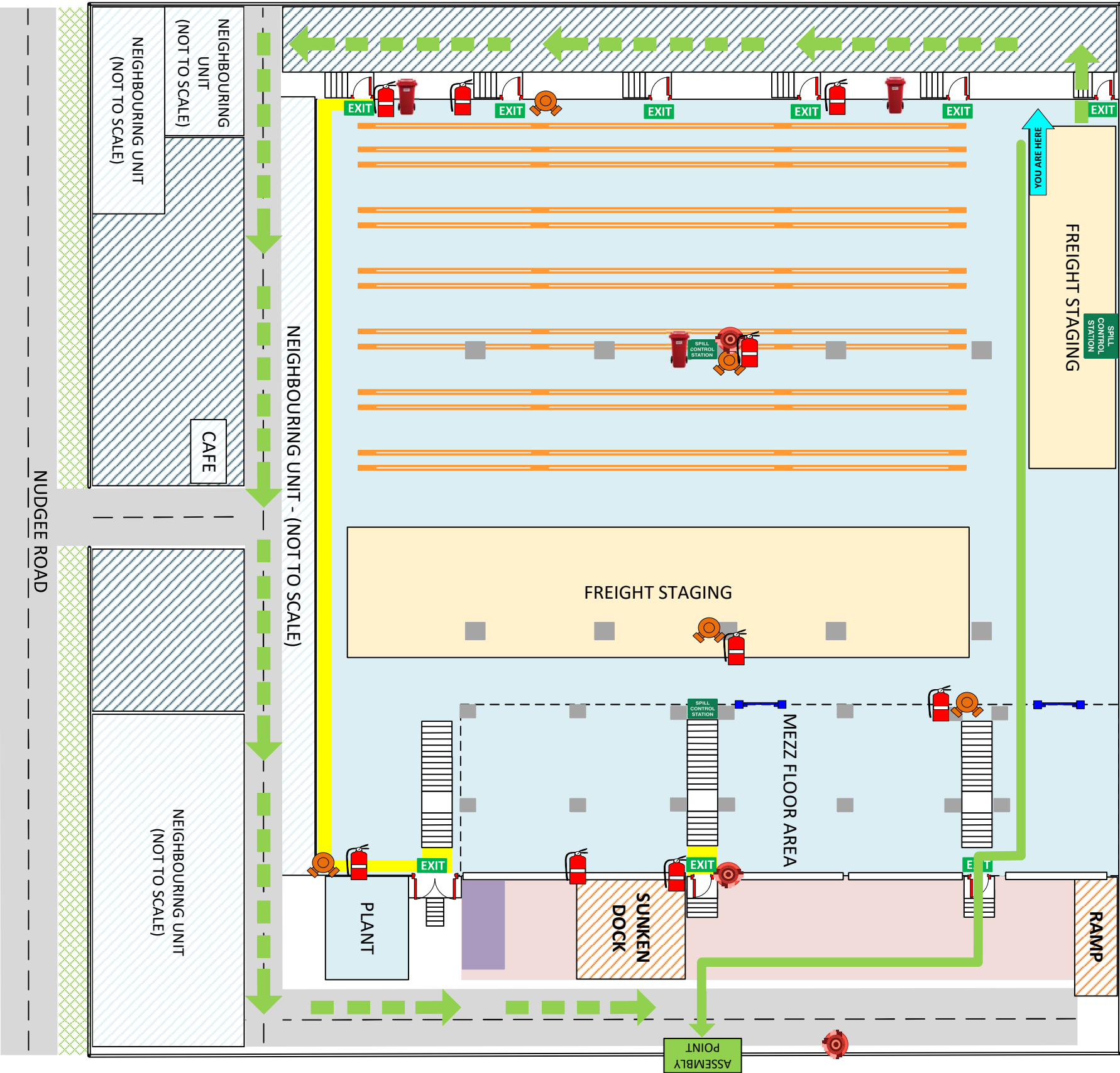
Ensure all mobility impaired persons are assisted with immediately to Emergency Assembly Area


**000**  
**EMERGENCY**  
In an emergency dial 000





BRISBANE 3PL EVACUATION PLAN


Unit 4B, 370 Nudgee Road, Hendra QLD 4011





 YOU ARE HERE


 ASSEMBLY POINT


 EXIT


 Path of Exit


 Alternative Path


 Fire Extinguisher


 Fire Hose Reel


 Fire Hydrant

 First Aid Kit

 Door

 Fire Door

 Spill Control Station

 Spill Bin

You are Here

Emergency Assembly Point

Fire Door Exit

Path of Exit

Alternative Path

Fire Extinguisher

Fire Hose Reel

Fire Hydrant

First Aid Kit

Door

Fire Door

Spill Control Station

Spill Bin

IN CASE OF A FIRE

REMOVE PEOPLE

From immediate danger

ALERT THE FIRE SERVICE

Break manual call point

Or call 000

CONFINE FIRE & SMOKE

Close doors and windows

(if safe to do so)

EVACUATE

To the assembly area

Ensure all mobility impaired persons are assisted with immediately to Emergency Assembly Area

 000  
EMERGENCY



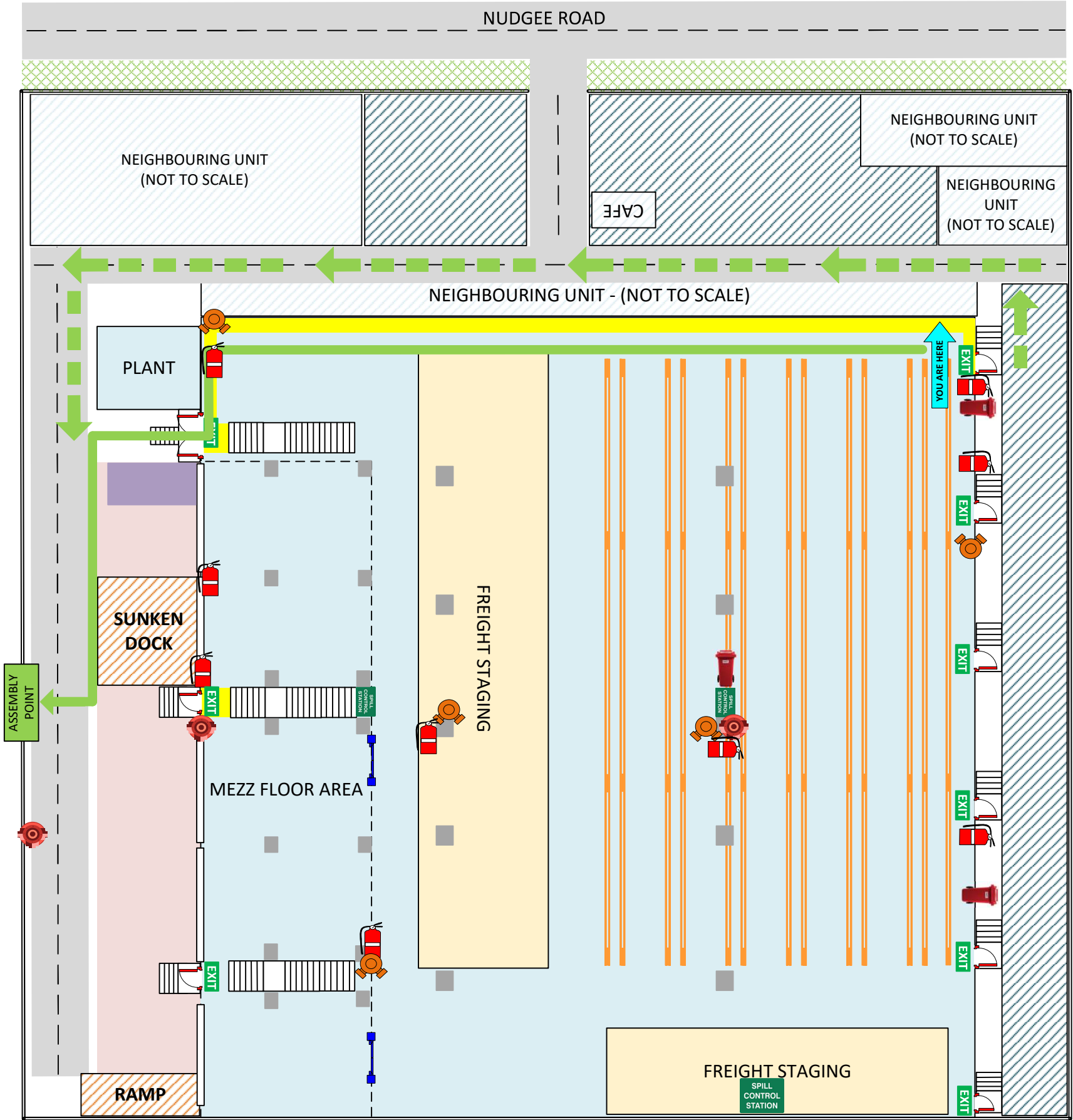
In an emergency dial 000





# BRISBANE 3PL EVACUATION PLAN

Unit 4B, 370 Nudgee Road, Hendra QLD 4011



	You are Here
	Emergency Assembly Point
	Fire Door Exit
	Path of Exit
	Alternative Path
	Fire Extinguisher
	Fire Hose Reel
	Fire Hydrant
	First Aid Kit
	Door
	Fire Door
	Spill Control Station
	Spill Bin

**IN CASE OF A FIRE**

**REMOVE PEOPLE**  
From immediate danger

**ALERT THE FIRE SERVICE**  
Break manual call point  
Or call 000

**CONFINE FIRE & SMOKE**  
Close doors and windows  
(if safe to do so)

**EVACUATE**  
To the assembly area

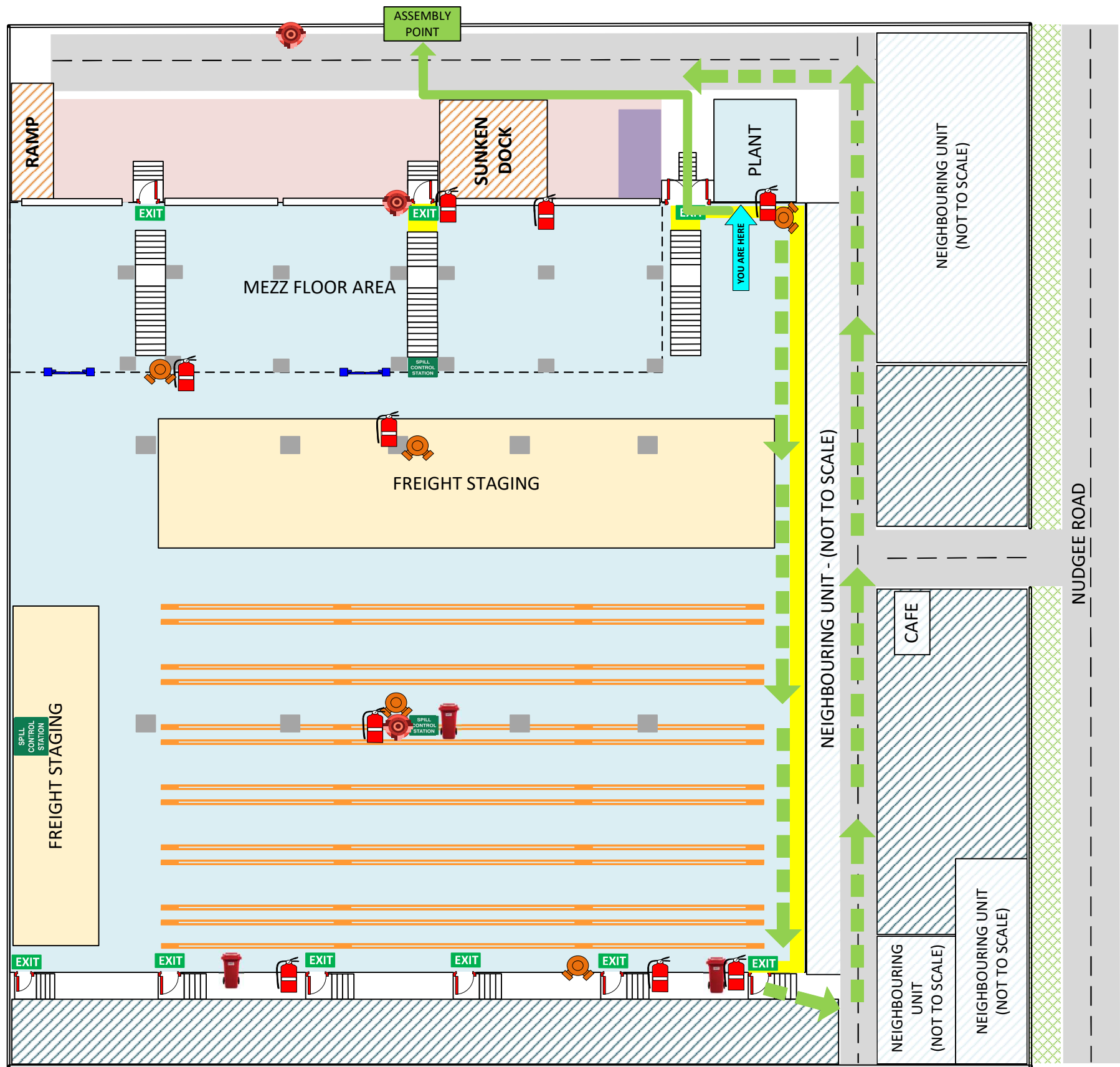
Ensure all mobility impaired persons are assisted with immediately to Emergency Assembly Area

In an emergency dial 000



# BRISBANE 3PL EVACUATION PLAN

Unit 4B, 370 Nudgee Road, Hendra QLD 4011



	You are Here
	Emergency Assembly Point
	Fire Door Exit
	Path of Exit
	Alternative Path
	Fire Extinguisher
	Fire Hose Reel
	Fire Hydrant
	First Aid Kit
	Door
	Fire Door
	Spill Control Station
	Spill Bin

**IN CASE OF A FIRE**

**REMOVE PEOPLE**  
From immediate danger

**ALERT THE FIRE SERVICE**  
Break manual call point  
Or call 000

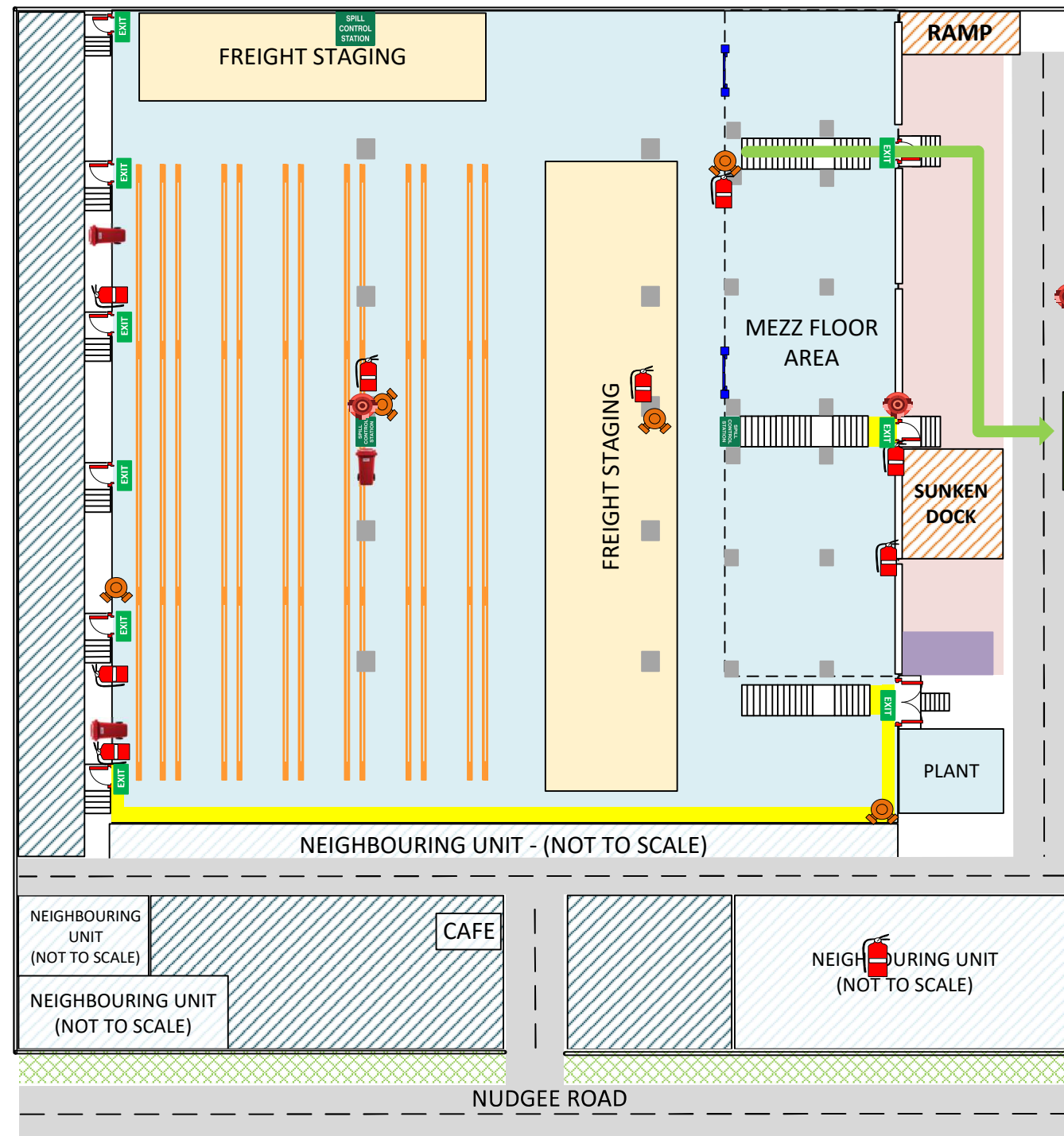
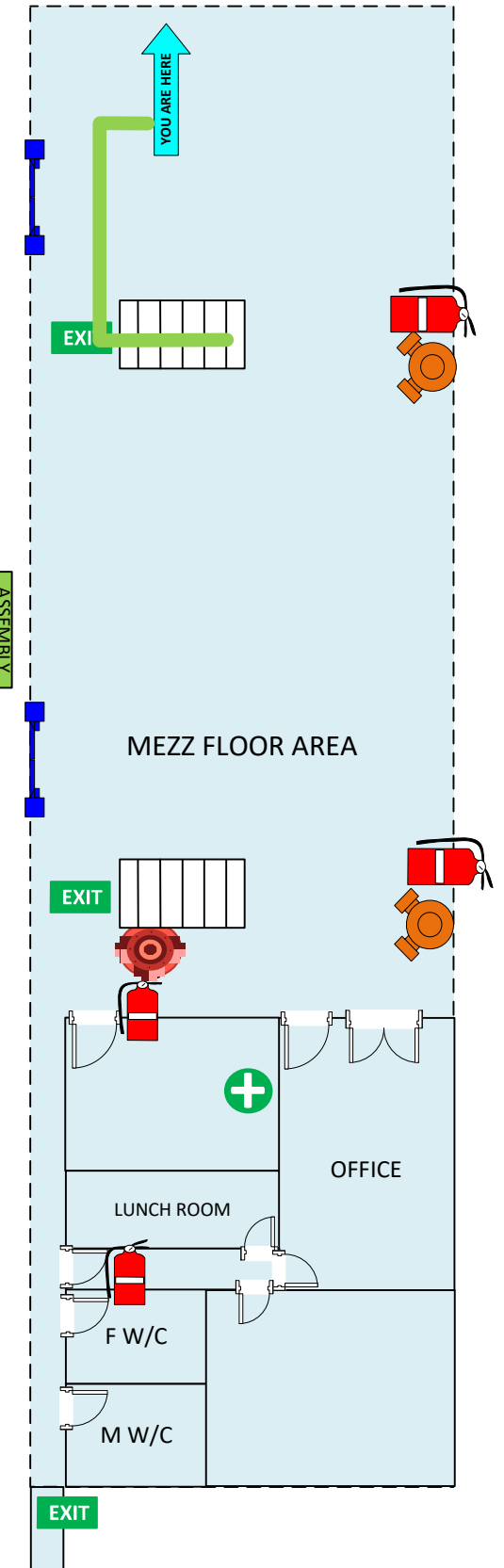
**CONFINE FIRE & SMOKE**  
Close doors and windows  
(if safe to do so)

**EVACUATE**  
To the assembly area

Ensure all mobility impaired persons are assisted with immediately to Emergency Assembly Area

In an emergency dial 000

**Unit 4B, 370 Nudgee Road, Hendra QLD 4011**

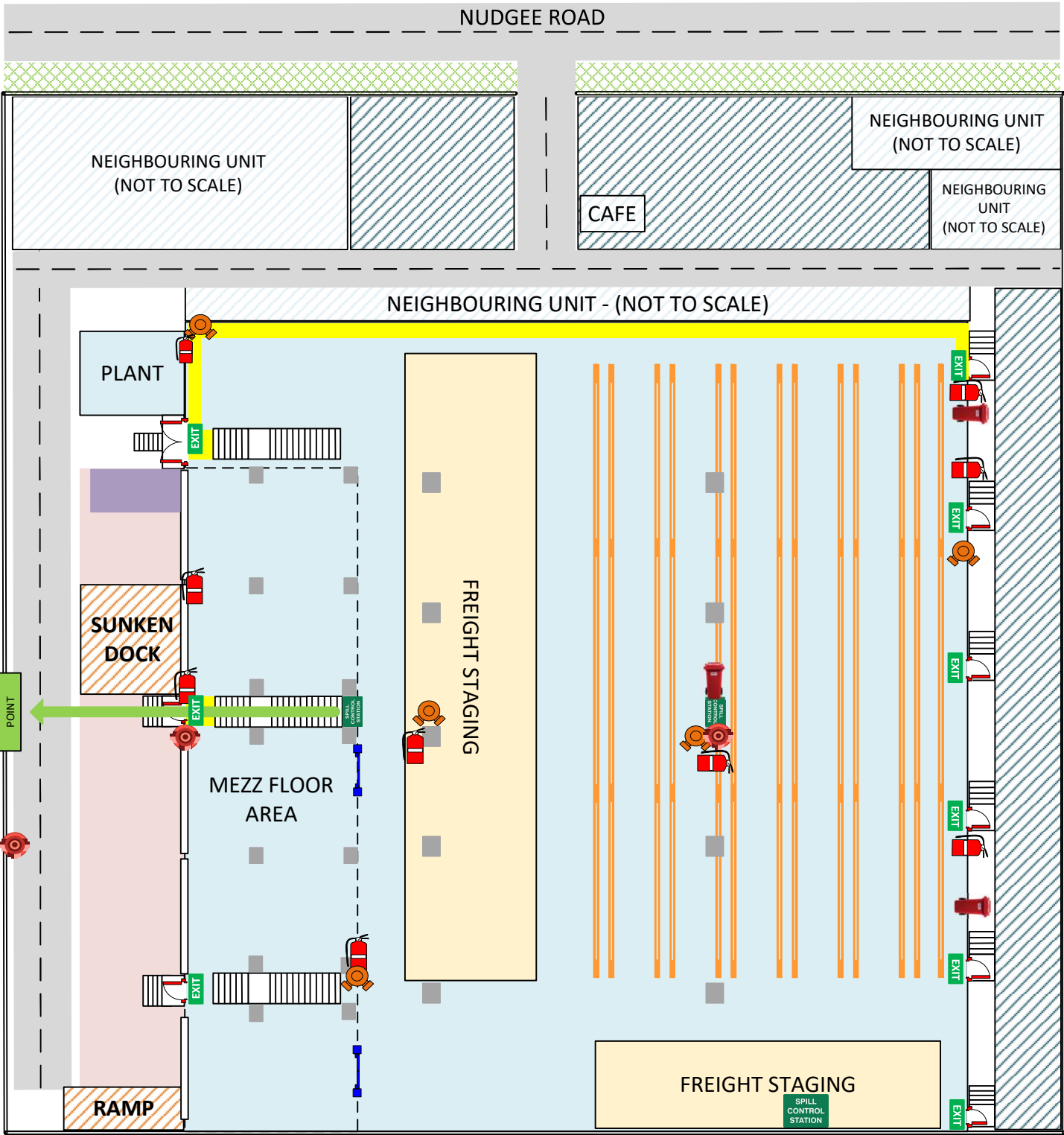
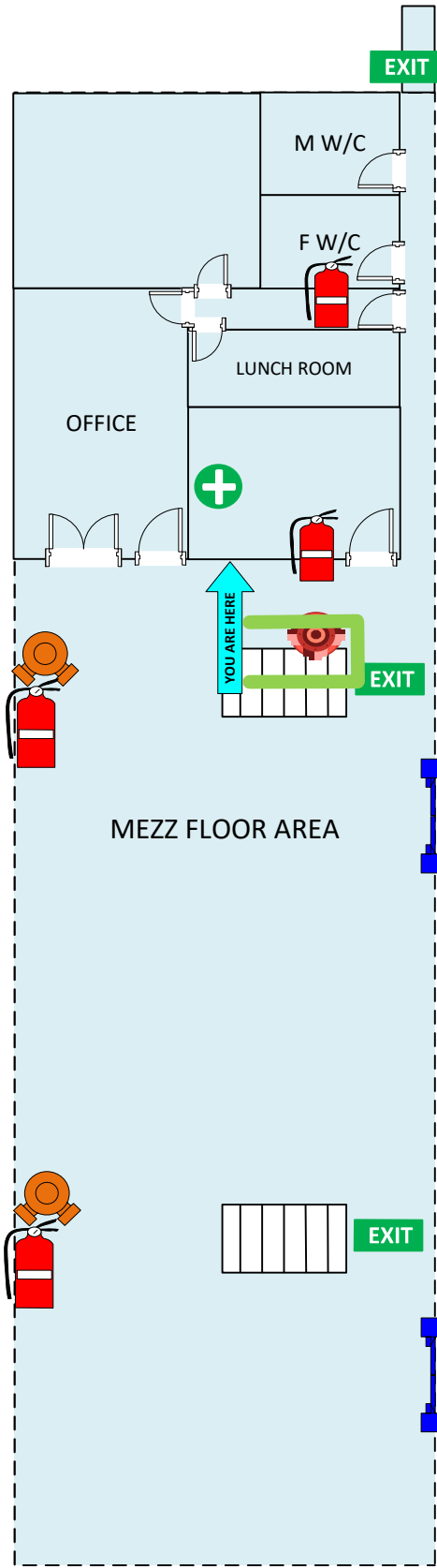






# BRISBANE 3PL EVACUATION PLAN

Unit 4B, 370 Nudgee Road, Hendra QLD 4011



	You are Here
	Emergency Assembly Point
	Fire Door Exit
	Path of Exit
	Alternative Path
	Fire Extinguisher
	Fire Hose Reel
	Fire Hydrant
	First Aid Kit
	Door
	Fire Door
	Spill Control Station
	Spill Bin

**IN CASE OF A FIRE**

**REMOVE PEOPLE**  
From immediate danger  
**ALERT THE FIRE SERVICE**  
Break manual call point  
Or call 000  
**CONFINE FIRE & SMOKE**  
Close doors and windows  
(if safe to do so)  
**EVACUATE**  
To the assembly area

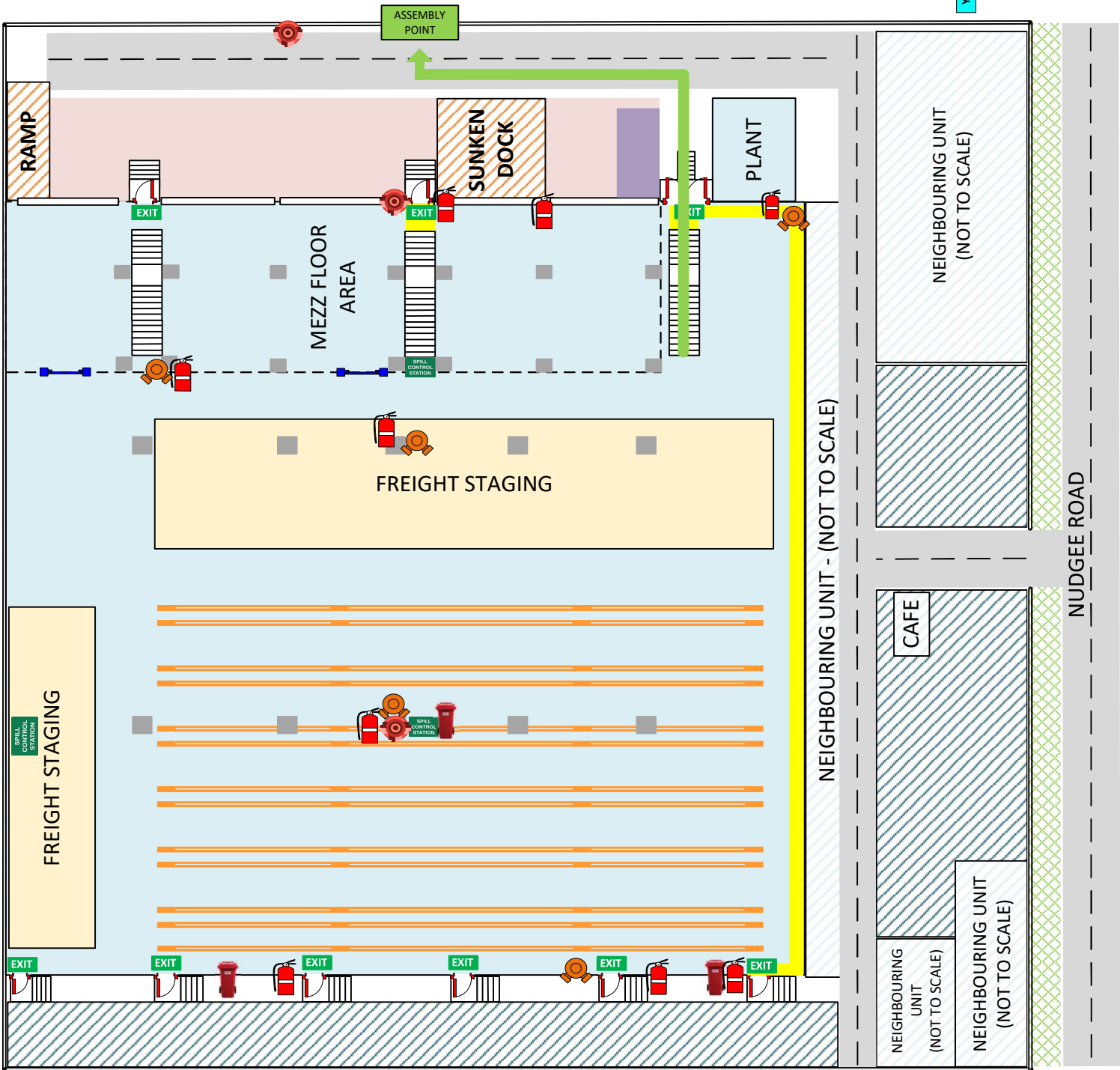
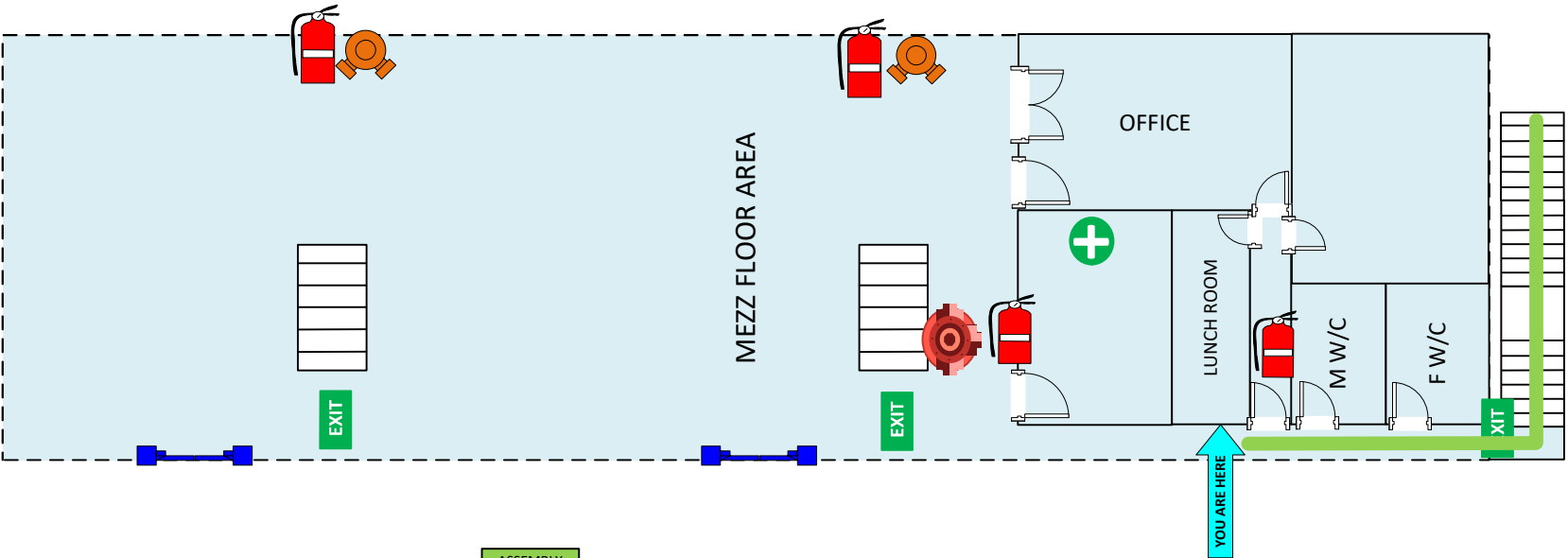
Ensure all mobility impaired persons are assisted with immediately to Emergency Assembly Area

**000**  
**EMERGENCY**  
In an emergency dial 000

# BRISBANE 3PL

## EVACUATION PLAN

Unit 4B, 370 Nudgee Road, Hendra  
QLD 4011



	You are Here
	Emergency Assembly Point
	Fire Door Exit
	Path of Exit
	Alternative Path
	Fire Extinguisher
	Fire Hose Reel
	Fire Hydrant
	First Aid Kit
	Door
	Fire Door
	Spill Control Station
	Spill Bin

### IN CASE OF A FIRE

**REMOVE PEOPLE**  
From immediate danger  
**ALERT THE FIRE SERVICE**  
Break manual call point  
Or call 000  
**CONFINE FIRE & SMOKE**  
Close doors and windows  
(if safe to do so)  
**EVACUATE**  
To the assembly area

Ensure all mobility impaired persons are assisted with immediately to Emergency Assembly Area

