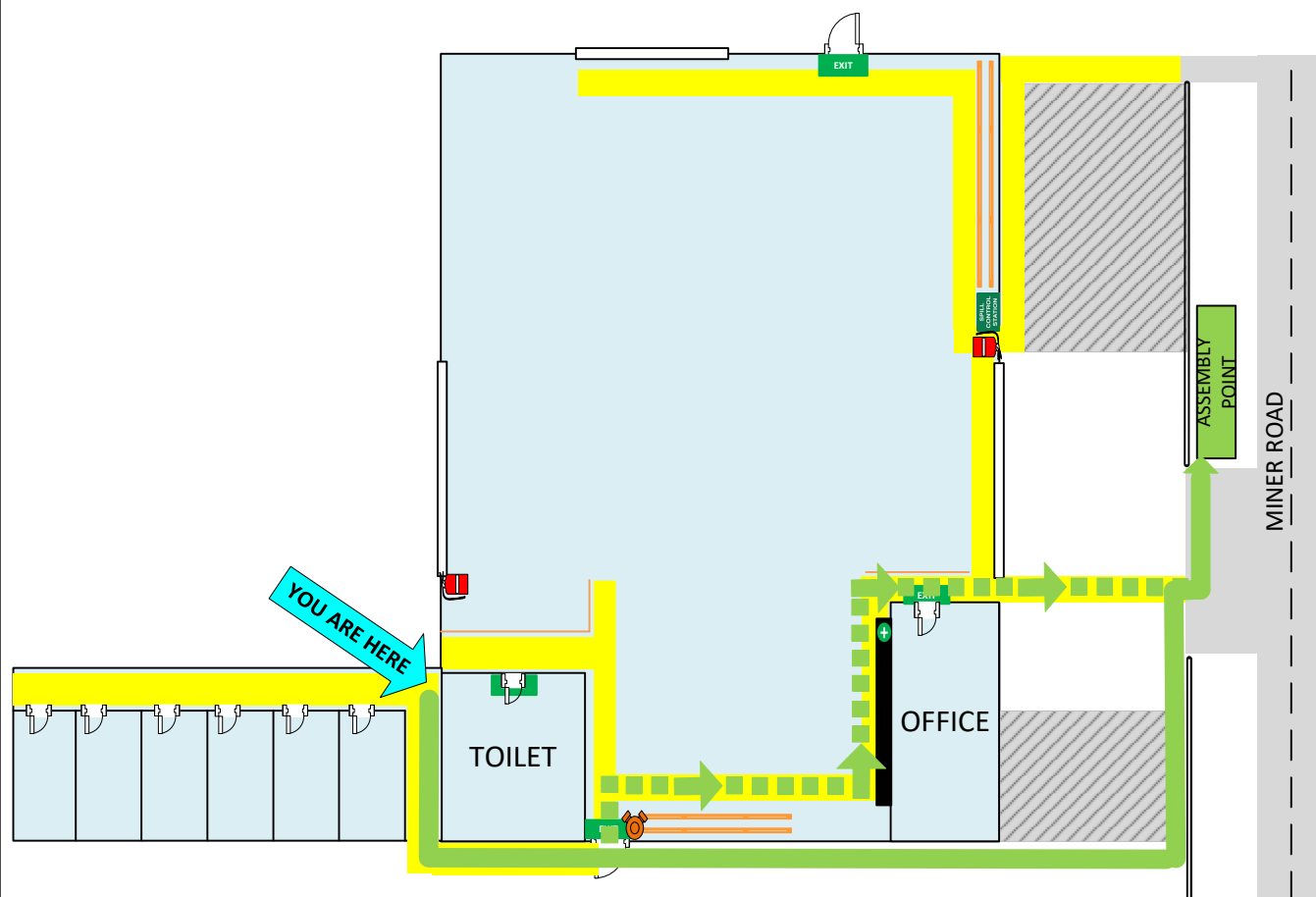


# LONGREACH EVACUATION PLAN

5 Miner Road, Longreach, QLD, 4730



	You are Here
	Emergency Assembly Point
	Fire Door Exit
	Path of Exit
	Alternative Path
	Fire Extinguisher
	Fire Hose Reel
	Spill Bin
	First Aid Kit
	Door

## IN CASE OF A FIRE

**REMOVE PEOPLE**  
From immediate danger  
**ALERT THE FIRE SERVICE**

Break manual call point  
Or call 000

**CONFINE FIRE & SMOKE**

Close doors and windows  
(if safe to do so)

**EVACUATE**  
To the assembly area

Ensure all mobility impaired persons are assisted with immediately to Emergency Assembly Area

**000**  
**EMERGENCY**  
In an emergency dial 000

VALID FROM: 04/04/2023  
TMP\_LNGR\_TMP\_EVAC\_5